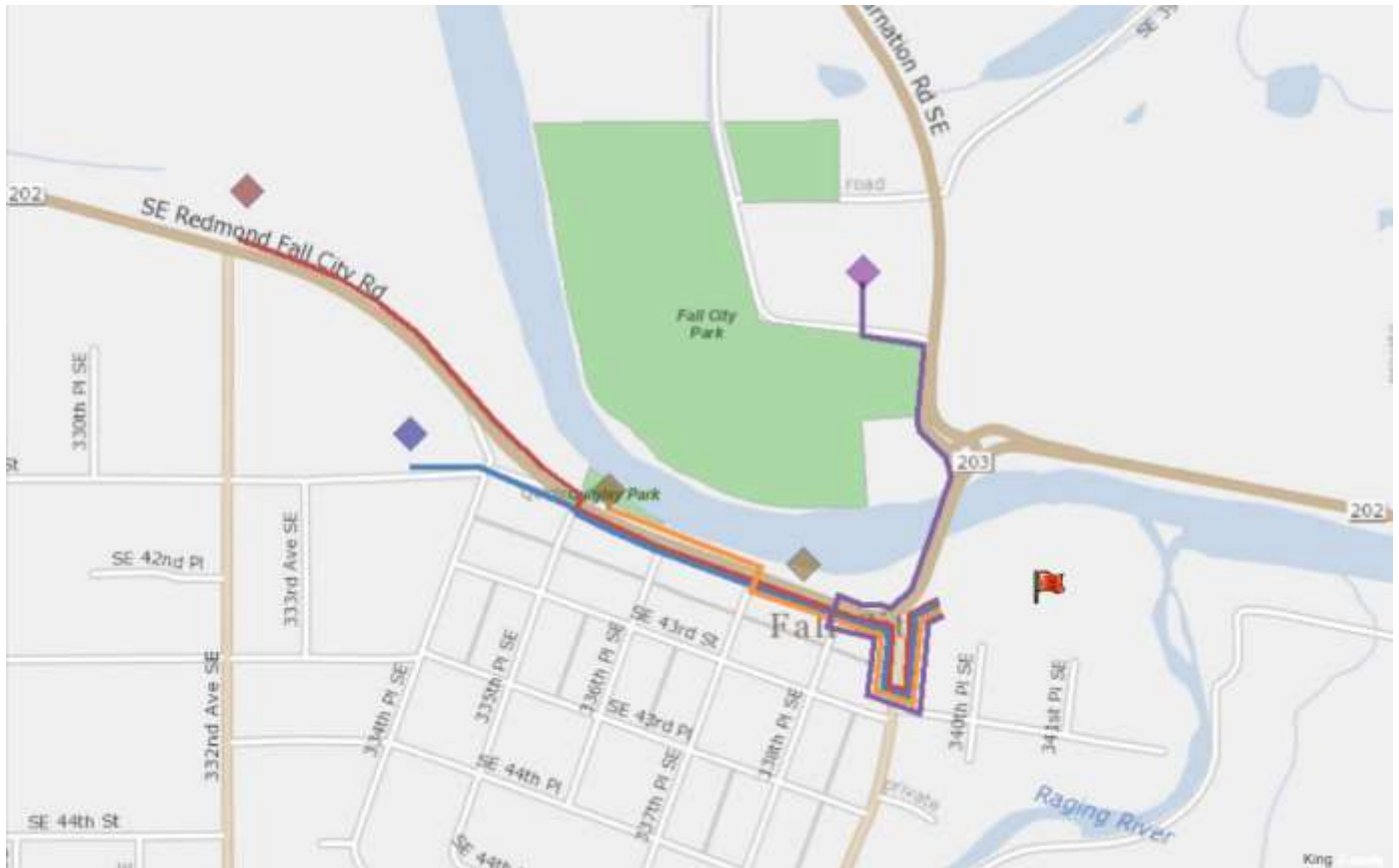


Parking

There are TWO entrances to the event that will be marked with balloon pillars. The primary entrance is the gravel parking lot to the North of the Roadhouse. The second entrance is the path that goes under the bridge and enters from the river side. There will be greeters at both!

Parking is located along the SR202 from Quigley Park to Preston-Fall City Road (orange). The Fall City Elementary School parking lot (blue) and Rainier Wood Recycling (red) are both open for parking. If those are all full, you can park in the overflow parking at Fall City Floating (purple) which is located at Fall City Park. Look for these signs: [pic of parking sign]



Fall City is an unincorporated area and parking is a bit spread out. Please consider the following:

- 1) Walk, bike, or golf cart it to the event if you live close enough.
- 2) Carpool if possible.
- 3) Be respectful of people's lawns, driveways, or clearly marked no parking areas.
- 4) Be prepared to walk at least a couple of blocks.
- 5) Use crosswalks!
- 5) If you have special needs, let one of the parking attendants know.