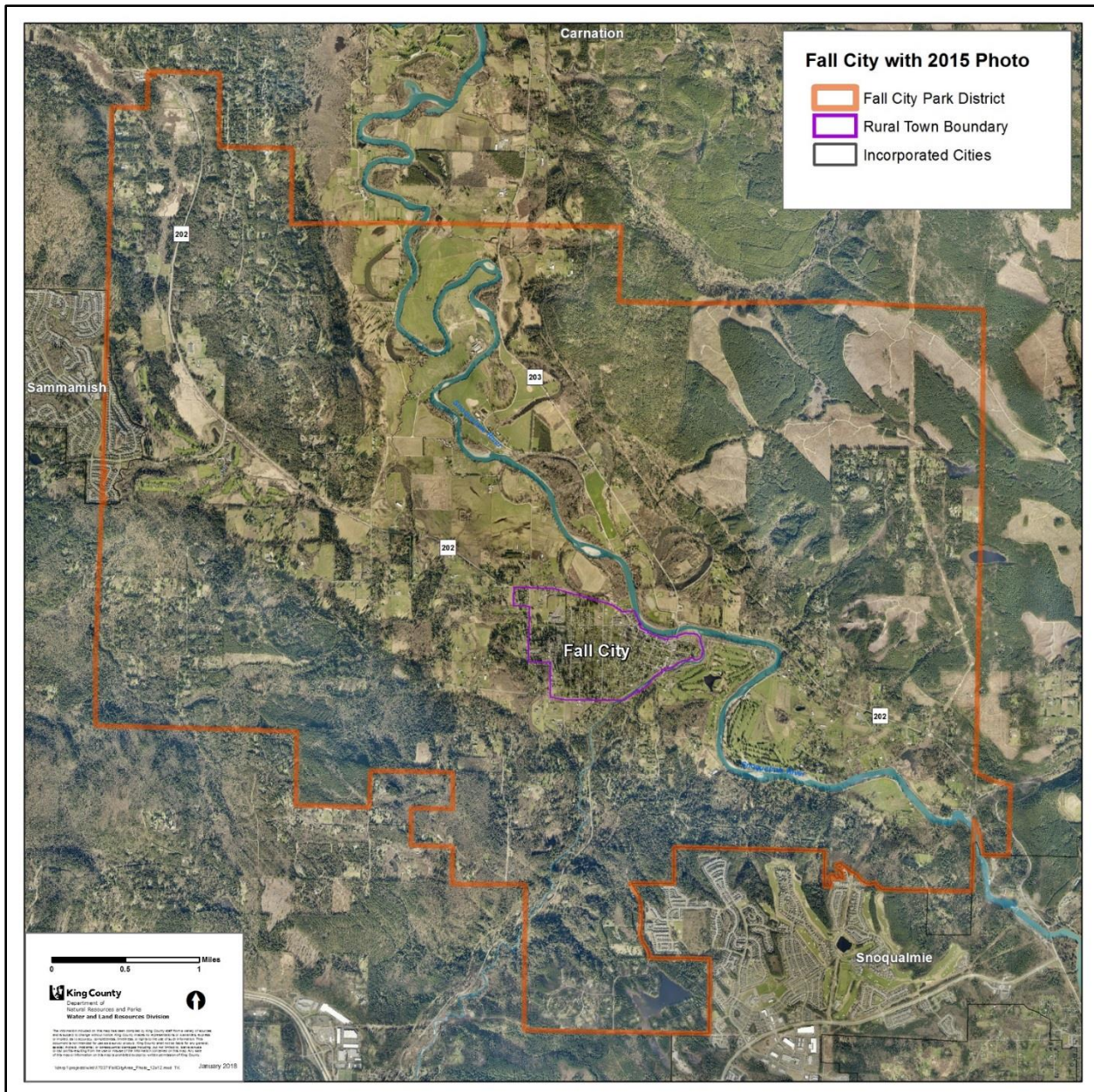


Figure 2: Project Boundary



Purpose of Land Acquisition and Funding

King County WLRD acquires property throughout the county for environmental management and capital projects. Environmental management includes habitat recovery and restoration, agriculture, forestlands and active and passive recreation. Capital projects include facilities, road right of way, levee setbacks, and other infrastructure projects. Funding for these acquisitions come from many different sources including external grants, rates, taxes or levies and other programs. Figure 3 provides a snapshot of the purpose of land acquisition, which division or department acquires land and how King County may fund these acquisitions (*Note: there may be exceptions to what is shown in Figure 3*). The source of funding